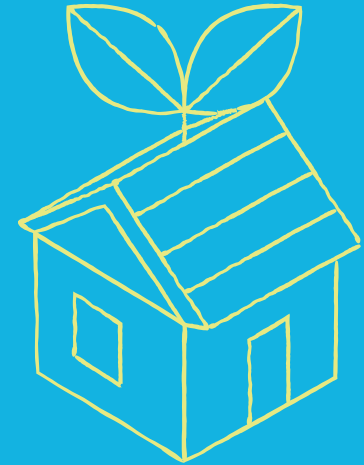


GO GREEN *for* FREE

HAWAI'I RESIDENTS, CUT ENERGY BILL COSTS BY UP TO \$340* ANNUALLY.

*Savings may vary and are based on a 4-bedroom home.



Energy Smart 4 Homes (ES4H) is a free direct install program for residential homes. Sign up today to receive free energy-saving products, a value of over \$150. It's a no-cost easy way to:

CUT
ELECTRIC
COSTS

LOWER
WATER &
SEWER FEES

CONSERVE
RESOURCES

SIGN UP AT HAWAIIENERGY.COM/ES4H
EMAIL QUESTIONS TO HAWAIIENERGY@LEIDOS.COM

ENERGY SMART 4 HOMES

At no cost to you,
your unit may be retrofitted with
energy-saving items such as:



**SELECT ENERGY
STAR® LIGHTING**



**HIGH EFFICIENCY
SHOWERHEADS**

Fixed & Handheld



**ADVANCED
POWER STRIPS**



**HIGH-EFFICIENCY
FAUCET AERATORS**

Kitchen & Bath

ON O'AHU CALL US AT **808-537-5577** | NEIGHBOR ISLANDS CALL TOLL-FREE **877-231-8222**



Hawai'i Energy

Hawai'i Energy helps educate island families and businesses about the many and lasting benefits of energy efficiency and conservation. We encourage and reward smart energy decisions that allow our state to reach 100% clean energy faster and cheaper, and to date, have saved Hawai'i more than a billion dollars in energy costs.



FREQUENTLY ASKED QUESTIONS

WHAT ARE THE BENEFITS OF ENERGY SMART 4 HOMES?

The Energy Smart 4 Homes (ES4H) program helps customers use electric energy more efficiently, save money, and conserve resources. ES4H also reduces water demand and associated sewer fees. The program provides a service that results in lower operating costs and better bottom lines for building owners and managers and helps to lower the costs of living for their tenants.

WHAT DOES ES4H OFFER?

Energy-efficient measures include:

- High pressure, high-efficiency showerheads
- High pressure, high-efficiency kitchen & bathroom faucet aerators
- ENERGY STAR®-certified Light Emitting Diode bulbs (LEDs)
- Advanced power management strips to aid in energy conservation and passive energy management

IS THERE A FEE FOR THIS SERVICE?

There are no charges or hidden fees for this service. It is FREE for eligible multifamily properties.

IF THE PROGRAM IS FREE, WHERE DOES THE MONEY COME FROM?

Hawai'i Energy programs like ES4H are made possible through the Public Benefits Fund, which supports initiatives that help consumers become more energy-efficient. The Fund is collected through a small surcharge that every electric utility customer in Hawai'i, Honolulu and Maui counties pay through their bill.

WHO IS ELIGIBLE?

All residents renting a Single-family or Multifamily property unit with electric water heating are eligible for the full benefits (all energy-efficient measures) offered by the ES4H program. All residents living in one of the designated eligible Zip Codes (see chart).

WHAT ABOUT PROPERTIES THAT HAVE GAS WATER HEATING?

Properties serviced with non-electric water heating are still eligible to receive partial benefits of the ES4H program. Consult with a member of the ES4H team for further information.

WHAT KIND OF SAVINGS CAN BE ACHIEVED THROUGH THESE ENERGY-EFFICIENT MEASURES?

- High-efficiency showerheads reduce electric water heating demand by up to 30%. These measures will help reduce water and sewer fees.
- High-efficiency faucet aerators in the kitchen and bathroom can help decrease hot water use — and electric water heating costs — without affecting water pressure. These also help reduce water and sewer fees.
- ENERGY STAR®-certified Compact Fluorescent Light bulbs (CFLs) use approximately 78% less energy and last 10x longer than incandescent bulbs. Light Emitting Diode (LED) bulb replacements use approximately 87% less energy and last up to 50x longer than incandescents.
- Using the energy-saving Smart Power Strip can help manage energy consumption and can eliminate phantom electrical loads (which can then reduce total energy demand).

ZIP CODE	CITY	ISLAND
96704	Captain Cook	Hawai'i
96719	Hāwī	Hawai'i
96720	Hilo	Hawai'i
96737	Ocean View	Hawai'i
96749	Kea'au	Hawai'i
96771	Mountain View	Hawai'i
96774	'Ō'ōkala	Hawai'i
96777	Pahala	Hawai'i
96778	Pāhoa	Hawai'i
96780	Pāpa'aloa	Hawai'i
96781	Papaikou	Hawai'i
96783	Pepe'ekeo	Hawai'i
96763	Lāna'i City	Lāna'i
96708	Ha'ikū	Maui
96753	Kīhei	Maui
96768	Makawao	Maui
96790	Kula	Maui
96793	Wailuku	Maui
96729	Ho'olehua	Moloka'i
96757	Kualapu'u	Moloka'i
96770	Maunaloa	Moloka'i
96717	Hau'ula	O'ahu
96731	Kahuku	O'ahu
96759	Kunia	O'ahu
96786	Wahiawā	O'ahu
96791	Mokulē'ia	O'ahu
96792	Wai'anae	O'ahu
96795	Waimānalo	O'ahu
96817	Honolulu	O'ahu
96819	Honolulu	O'ahu
96826	Honolulu	O'ahu
96762	Lāi'e	O'ahu
96730	Ka'a'awa	O'ahu
96713	Hāna	Maui
96742	Kalaupapa	Moloka'i
96748	Puko'o	Moloka'i

WHAT IS INVOLVED IN THIS ENERGY RETROFIT OF MY UNIT?

Trained ES4H technicians will assess each participating residential unit and exchange and replace any existing water and lighting measures that are deemed energy inefficient.

WHO DOES THE REPLACEMENT(S)?

Trained ES4H technicians perform the installation of lighting and water measures as needed.

HOW LONG DOES AN INSTALLATION TAKE?

All units are different in terms of size and furnishings. While we cannot guarantee a specific window of time, we generally estimate approximately 20-40 minutes per unit although it typically takes much less time to complete.

HOW DO YOU SCHEDULE INSTALLATION APPOINTMENTS?

Hawai'i Energy is unable to schedule a specific start or finish time. All scheduled installations are scheduled during a installation window of 2-3 hours (e.g. 9:30 AM – 11:30 AM).